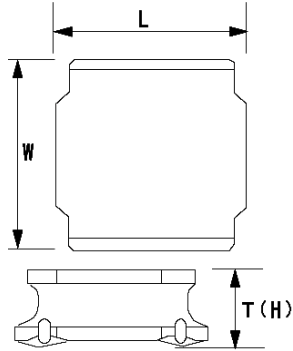


SMD Power Inductors (NR series)

NR4018T2R2M



■ Features

- Item Summary
2.2 μ H ($\pm 20\%$), 2700mA, 1440mA
- Lifecycle Stage
Mass Production
- Standard packaging quantity (minimum)
Taping 3500pcs

■ Products characteristics table

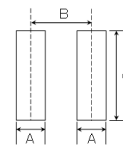
CaseSize (EIA/JIS)	-/4018
Inductance	2.2 μ H ($\pm 20\%$)
Inductance Measuring Frequency	100kHz
Rated Current -Saturation Current	2700mA
Rated Current -Temperature Rise Current	1440mA
DC Resistance (max)	0.072 Ω
Avg. of DC Resistance	0.06 Ω
Temperature Range	-25°C to 120°C
Self-resonant Frequency (min)	52MHz
RoHS Compliance	Yes
Halogen Free	Yes
Soldering Method	Reflow

■ External Dimensions

L	4mm ± 0.2
W	4mm ± 0.2
H	1.8mm max

■ Recommended Land Patterns

【推奨ランドパターン】 実装上の注意 ・実装状態を確認の上ご使用ください。よろしくお買い求めいたします。 ・本製品のはんだ付けはリフローはんだ工法に限ります。
【Recommended Land Patterns】 Surface Mounting ・Mounting and soldering conditions should be checked beforehand. ・Applicable soldering process to these products is reflow soldering only.



SMD Power Inductors (NR series/NR series H type/S type /V type)			
Type	A	B	C
NR 4010, NRS4010,			
NR 4012, NRS4012,	1.2	2.8	3.7
NR 4018, NRS4018			

unit:mm

2013.08.20

The data is reference only. Electrical characteristics vary depending on environment or measurement condition.
TAIYO YUDEN reserves the right to make change to the Date at any time without notice.
Before making final selection, please check product specification.